

SWP-27340302-28-E1-3

Advanced

WR-28 Waveguide Power Divider, 2-Way, 26.5 to 40 GHz

Description:

Model SWP-27340302-28-E1-3 is a full band WR-28, 2-way power divider that operates from 26.5 to 40 GHz. The power divider offers a typical insertion loss of 0.3 dB and typical Isolation of 20 dB. All ports are well-balanced and in-phase for power dividing or combining applications across the band. The power divider is configured as an inline package with WR-28 waveguides and UG-599/U compatible flanges at all ports. The input or output port orientation can be converted from a H-plane to E-plane configuration by installing Eravant's standard compact 90° twist, model **SWB-28090-TB-C**. A right angle, 2-way configuration is offered under model **SWP-27340302-28-S1**. Other power splitting options, such as 4-way, 8-way, and 16-way division, are available for both right-angle and inline configurations under different model numbers.



Features:

- Full Band Performance
- Low Insertion Loss
- High Isolation
- Compact Package

Applications:

- Test Labs
- Test Instrumentation
- Sub-assemblies
- Twist Compatible

Electrical Specifications:

Parameter	Minimum	Typical	Maximum
Frequency	26.5 GHz		40 GHz
Insertion Loss		0.3 dB	
Power Unbalance		±0.3 dB	
Isolation		20 dB	
Return Loss		20 dB	
Specification Temperature		+25 °C	
Operating Temperature	-40 °C		+85 °C

Mechanical Specifications:

Item	Specification
RF Ports	WR-28 Waveguide with UG-599/U Compatible Flange
Material	Aluminum
Finish	Gold Plated
Weight	2.8 oz.
Outline	WP-A2I-3



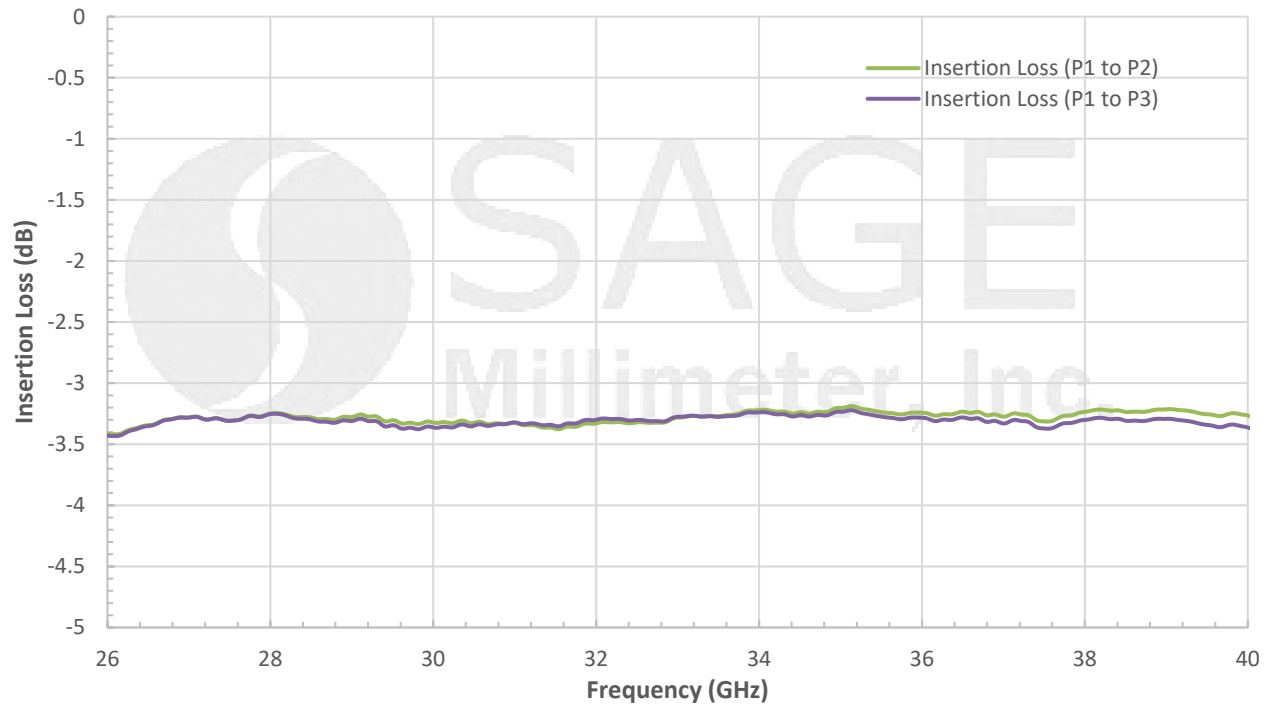
www.eravant.com | 501 Amapola Ave, Torrance, CA 90501
Phone: 424-757-0168 | Fax: 424-757-0188 | Email: sales@eravant.com

SWP-27340302-28-E1-3

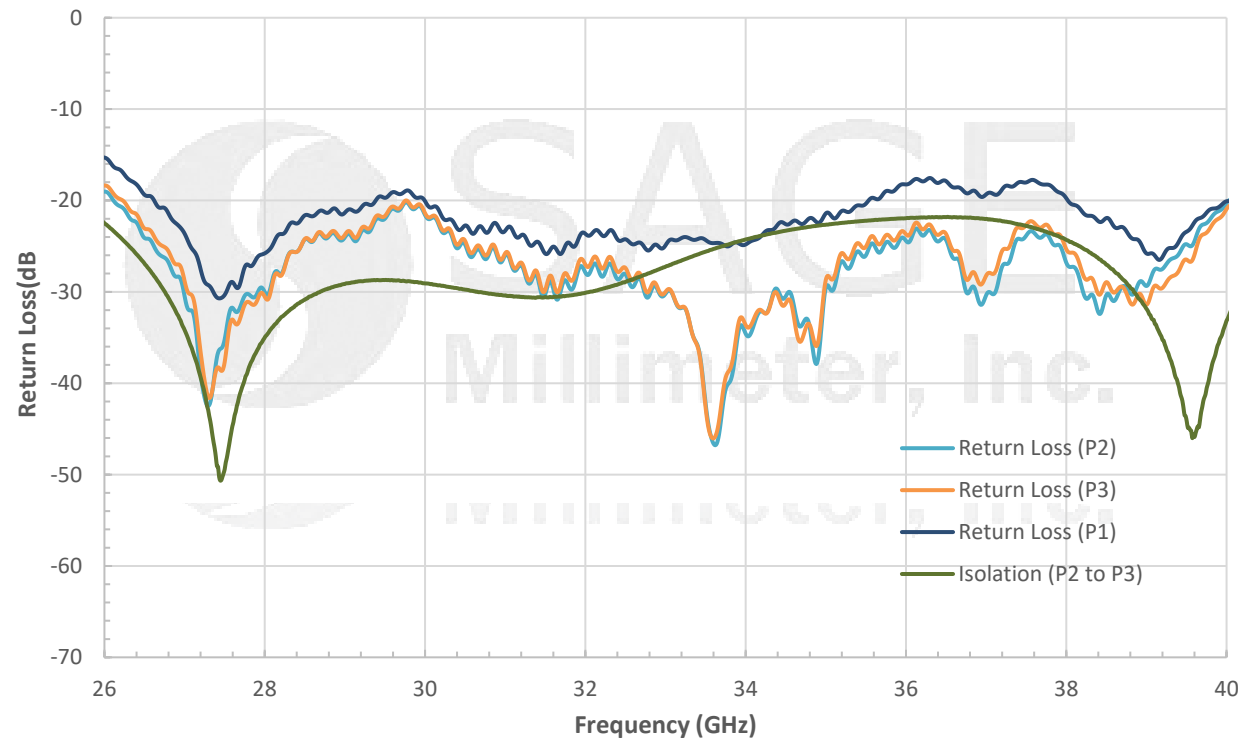
Advanced

WR-28 Waveguide Power Divider, 2-Way, 26.5 to 40 GHz

Typical Measured Insertion Loss Vs Frequency



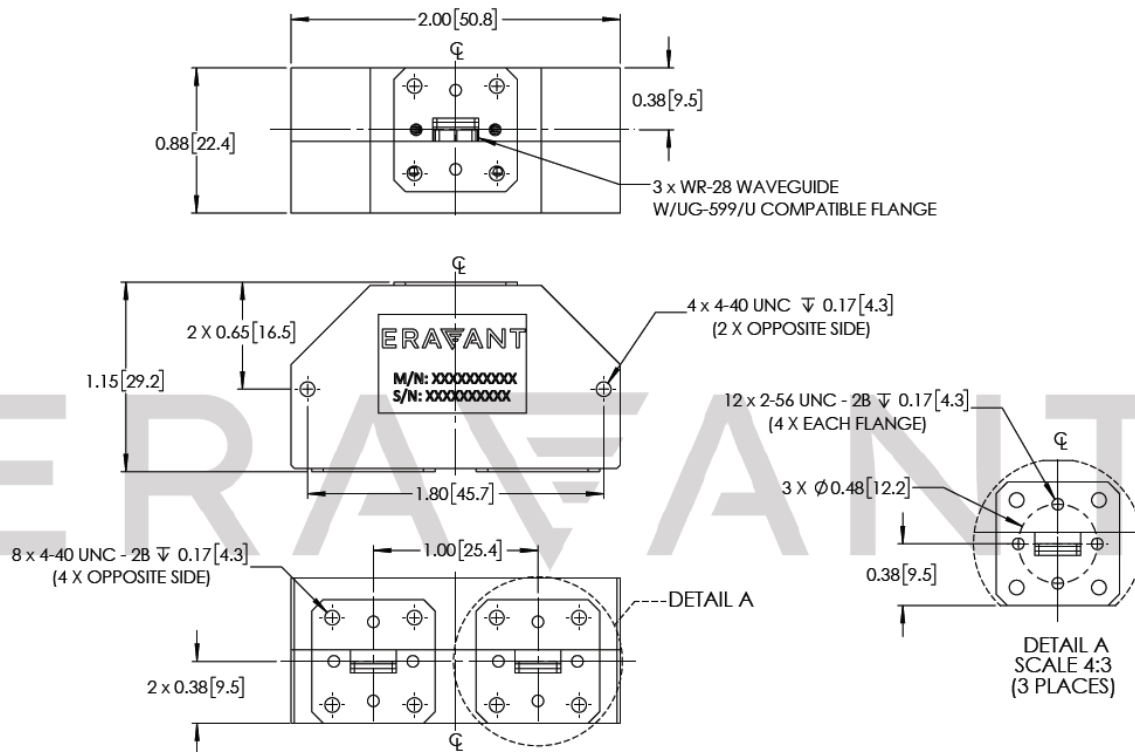
Typical Measured Isolation and Return Loss Vs Frequency



SWP-27340302-28-E1-3

Advanced

WR-28 Waveguide Power Divider, 2-Way, 26.5 to 40 GHz

Mechanical Outline: (Unless otherwise specified, all dimensions are in inches [millimeters])**Note:**

- All data presented is collected from a sample lot. Actual data may vary unit to unit.
- All testing was performed under +25 °C case temperature.
- The compact 90° twist, model **SWB-28090-TB-C**, is sold separately.
- Eravant reserves the right to change the information presented without notice.

Caution:

- Exceeding absolute maximum ratings shown will damage the device.
- Any foreign objects in the waveguide will degrade performance and/or damage the device.

